

# Implexx

Digital Environmental  
Sensing

## Leaf Temperature Sensors

**MODELS** LT-1T / LT-2T



**A miniaturised,  
high precision,  
low impact  
sensor for:**

High precision leaf temperature measurements

Leaf to Air Temperature Difference (LATD)

Rapid responses of plants to environmental conditions

A fast install in seconds for long-term measurements

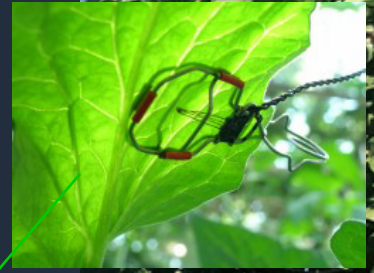
Digital, SDI-12 output for data logging and IoT applications

# Implexx

high-performance sensors

The **Implexx leaf temperature sensor** is ideal for plant physiology research as well as irrigation management in agriculture and horticulture. The sensor is highly precise with the ability to measure rapid plant responses to environmental stimuli such as VPD, solar radiation, or soil water deficits. With a low impact, clip on design, the Implexx leaf temperature sensor is installed in seconds yet has a minimal influence on the leaf surface. A digital, SDI-12 sensor, the Implexx sensor is supported by any compatible data logger or IoT device.

Two models are available: LT-1T and LT-2T. The LT-1T is a single temperature sensor that clips onto the leaf. The LT-2T consists of two temperature sensors – one sensor that sits on the surface of the leaf, and the second sensor measuring the boundary layer temperature from the leaf. The LT-2T model is ideal for Leaf to Air Temperature Difference (LATD) measurements.



Feature	LT-1T	LT-2T
# of Temperature Sensors	One	Two
Suitable For....	Leaf surface temperature	Leaf surface and air boundary layer temperature
Measurement Range	-5 to +50 °C	
Measurement Accuracy	<0.15 °C	
Thermistor Contact Area	~ 1 mm <sup>2</sup>	
Leaf Clip Weight	1.6 grams	
Output	SDI-12 (voltage or 4-20mA available upon request)	
Input	5 to 24 VDC	
Measurement Time	0.15 seconds	
Operating Temperature	-5 to +50 °C	
Protection	IP64	
Cable Length	5 m (standard), maximum 75 m	
Warranty	1 year	