



GreenLight - RedLight Logger Quick Start Guide

For more detailed information please refer to the software manual or technical handbook.

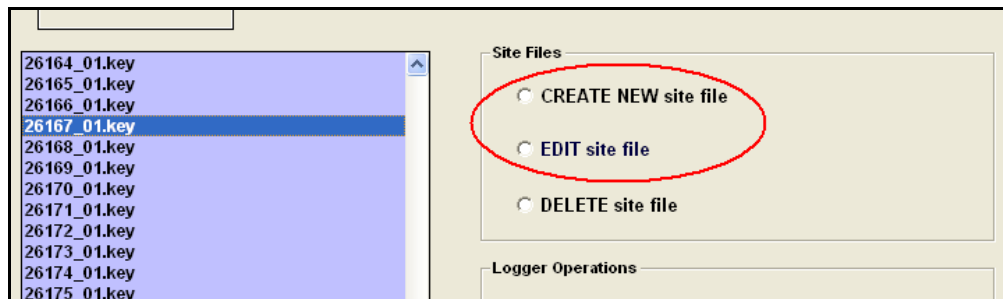
- Install the GreenLight - RedLight software on your computer.
- Unscrew top cap and remove the red insulating washer from the positive battery terminal.
- Replace the terminal screw but do not over tighten.

To ensure correct interpretation of the data recorded with your Odyssey logger, the software requires that you enter two sets of parameters. The 'Offset Values' and the 'Slope'.

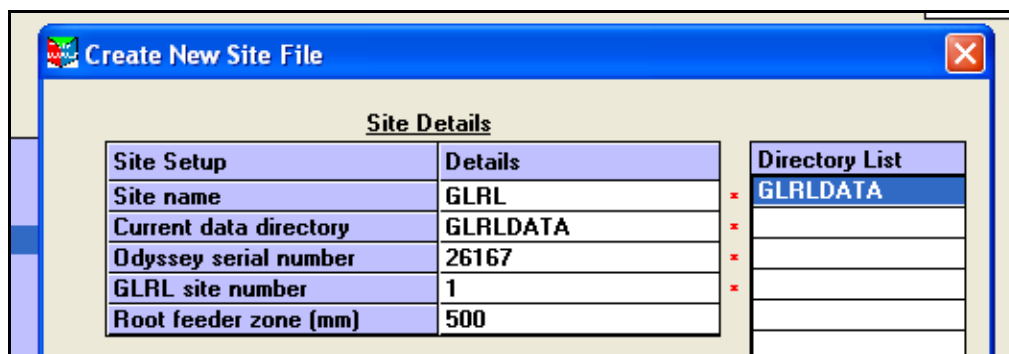
Setting the 'Offset' and 'Slope' values.

The offset values are supplied on a sheet with each sensor rod and are specific to each rod.

- Start the GreenLight - RedLight software.
- Create a new site file for your logger or edit an existing site file.



- On the next screen fill in the 'Site Details' pertaining to your logger.



- Set the desired measurement type.

- At the bottom of the screen select the sensor depths that match your sensor rod. Default values will be set as follows:
 - If measuring soil moisture as a percentage the software will default to:
 - Slope = 120.
 - Field Cap = 100.
 - Refill = 60.
 - If measuring soil moisture as volumetric the software will default to:
 - Slope = 500.
 - Field Cap = 30.
 - Refill = 7.
- From the supplied offset sheet, enter the values for each sensor into the Offset column.

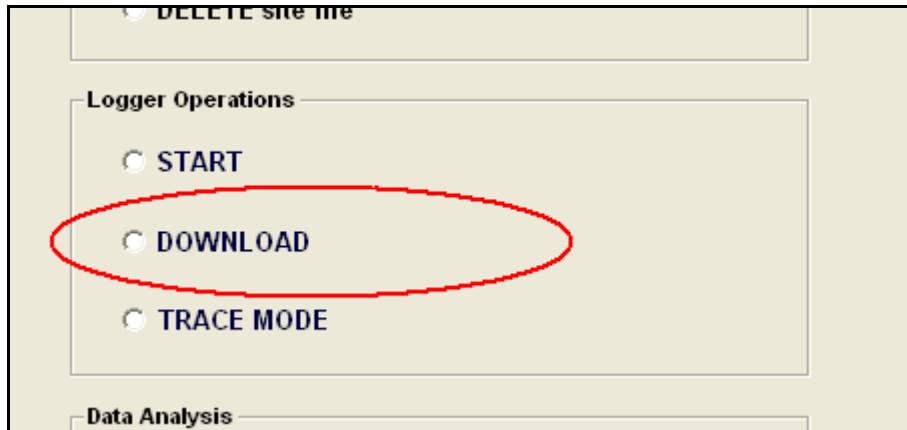
Depth(cm)	Offset	Slope	Field Cap	Refill	Soil Type	ON/OFF
20	9570	120	100	60		ON
40	9379	120	100	60		ON
60	9412	120	100	60		ON
80	9125	120	100	60		ON
						OFF

- Click 'OK' to save your settings.

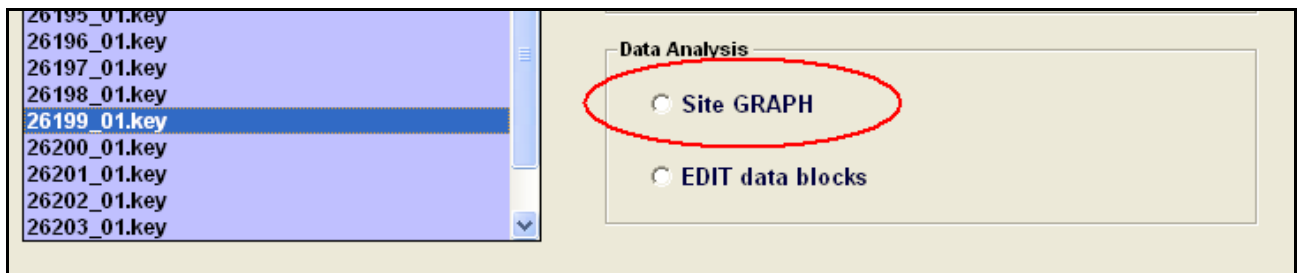
You are now ready to calibrate your sensor and logger.

Sensor and Logger Calibration.

- Set up an area of saturated soil around an access tube to simulate a 100% field capacity situation (see *handbook for more information*).
- Using the software, start your logger and insert it into the access tube. A short scan time will be desirable to record sufficient data. Leave the logger in place for an hour or two whilst maintaining the saturated soil.
- Once enough data has been recorded, download it to the computer.



- With the data downloaded you will be presented with a graph of the data otherwise you can view the data by selecting the 'Graph' option at a later time.



- At the top of the graph page adjust the slope value until each sensor reads approximately 100% for percentage measurements or the full volumetric value (default = 30) for volumetric measurements. Press the 'Enter' key to accept these new values. You can adjust each slope value separately by pressing the enter key in between adjustments if preferable.

Selected Depths in cm		Calibration Data																		
<input checked="" type="checkbox"/> 50	<input type="checkbox"/> 90	Depth(cm)	Offset	Slope	Full	Refill														
<input type="checkbox"/> 60	<input type="checkbox"/> 100	10	9998	114	100	60														
<input type="checkbox"/> 70	<input type="checkbox"/> 110	20	9954	111	100	60														
<input type="checkbox"/> 80	<input type="checkbox"/> 120	30	9987	114	100	60														
		40	9856	116	100	60														
		50	9854	118	100	60														
GreenLight-RedLight Site '26198'																				
<table border="1"> <tr><td> </td><td> </td><td> </td><td> </td><td> </td><td> </td><td> </td></tr> <tr><td> </td><td> </td><td> </td><td> </td><td> </td><td> </td><td> </td></tr> </table>																				

- Your logger is now ready to use. The offset values and slope adjustments will be retained by the software.

Thank you for supporting Odyssey products. Proudly made in New Zealand.